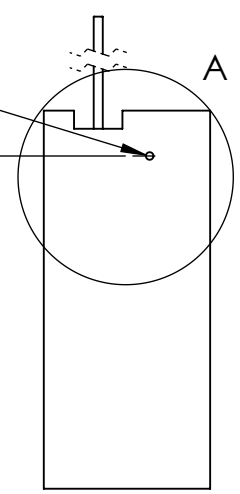
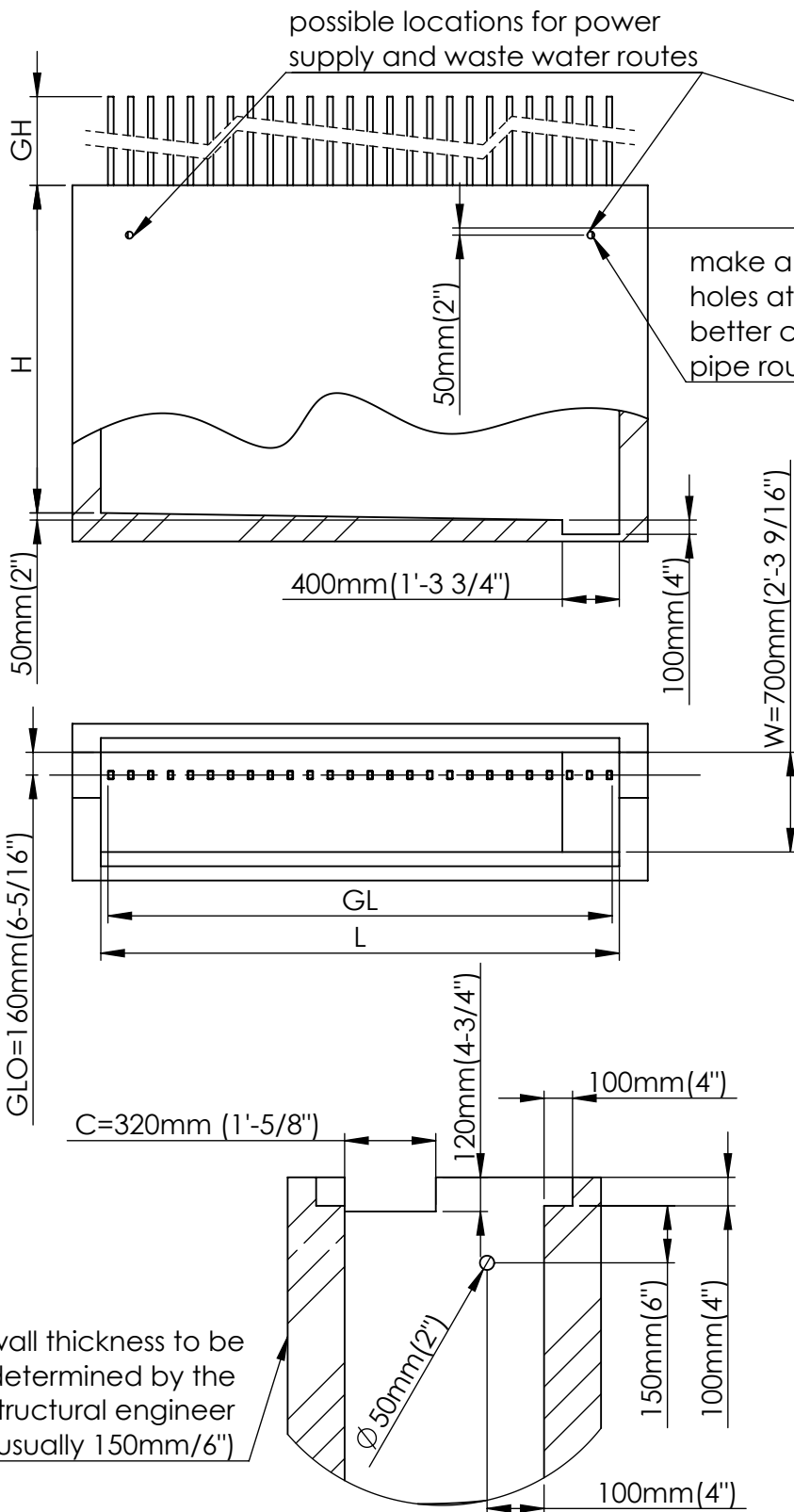


Concrete vault dimensions (single gate section)



W - concrete width
 $W = 700\text{mm}(2'-3 \frac{9}{16}'')$

GL - gate length

L - concrete length
 $L = GL + 160\text{mm}(6-5/16'')$

GH - gate height above the finished level

H - concrete height:
 for $GH \leq 1400\text{mm}(4'-7 \frac{1}{8}'')$
 $H = 2300\text{mm}(7'-6 \frac{9}{16}'')$

for $GH > 1400\text{mm}(4'-7 \frac{1}{8}'')$
 $H = GH + 900\text{mm}(2'-11 \frac{7}{16}'')$

GLO - gate line offset:
 for standard 40x60mm pickets
 $GLO = 160\text{mm}(6-5/16'')$

for larger pickets, ask for details
 $GLO > 160\text{mm}(6-5/16'')$

C - cutout:
 for standard 40x60mm pickets
 $C = 320\text{mm}(1'-5/8'')$

for larger pickets, ask for details
 $C > 320\text{mm}(1'-5/8'')$



JP Novation Sp. z o.o.
 ul. Turystyczna 44G
 20-207 Lublin
 POLAND

e-mail: office@fancyfence.eu